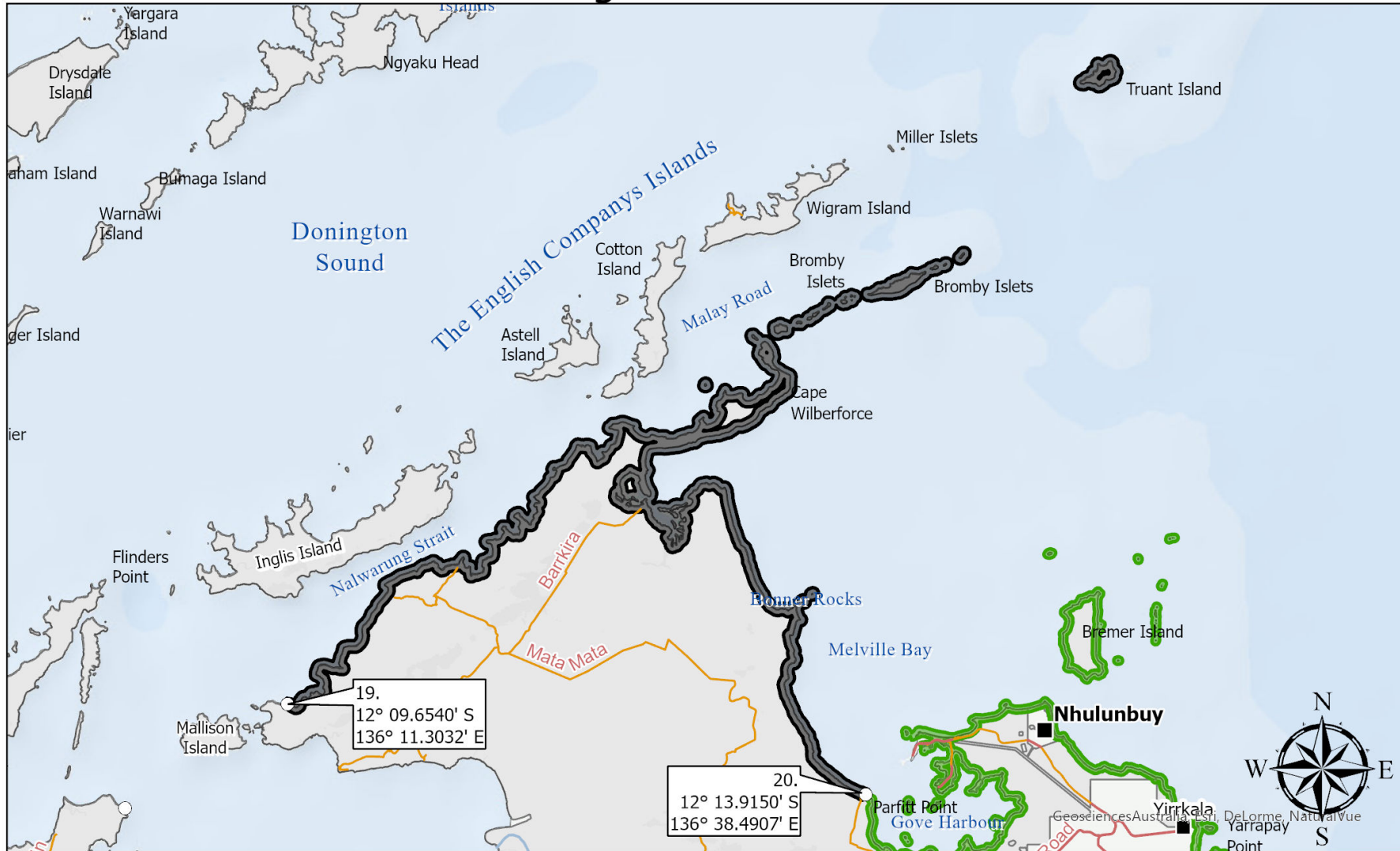


Fishing Access Zone 11



Permit area
 Aboriginal Land Trust

Permit area applies to the intertidal zone along the highlighted coastline and the waters to the tidal extent of intersecting waterways. The intertidal zone is that area between the Mean Low Water Mark and the Mean High Water Mark. The Mean Low Water Mark is the average position of the water at low tide. The Mean High Water Mark is the average position of the water at high tide.



Zone range

From Godjiboi Point (12° 09.6540' S 136° 11.3032' E) to the western point of the Long Term Access area – Nhulunbuy (12° 13.9150' S 136° 38.4907' E).

Key geographic features:

Narlung Strait	Elizabeth Bay	Cape Wilberforce
Bromby Islands	Bonner Rocks	Melville Bay